



CRIST S.A.

Gdynia, Poland

Power of experience



30 YEARS of
experience

Prefabrication hall G-06
8260 m²

Module assembly workshop G-08
12160 m²

Prefabrication hall G-503
8340 m²

Prefabrication hall G-505
1850 m²

Gantry crane
Q = 1000T

Storage area
8260 m²

Module assembly
workshop
G-502
13310 m²

Two painting lines
36 m x 13 m

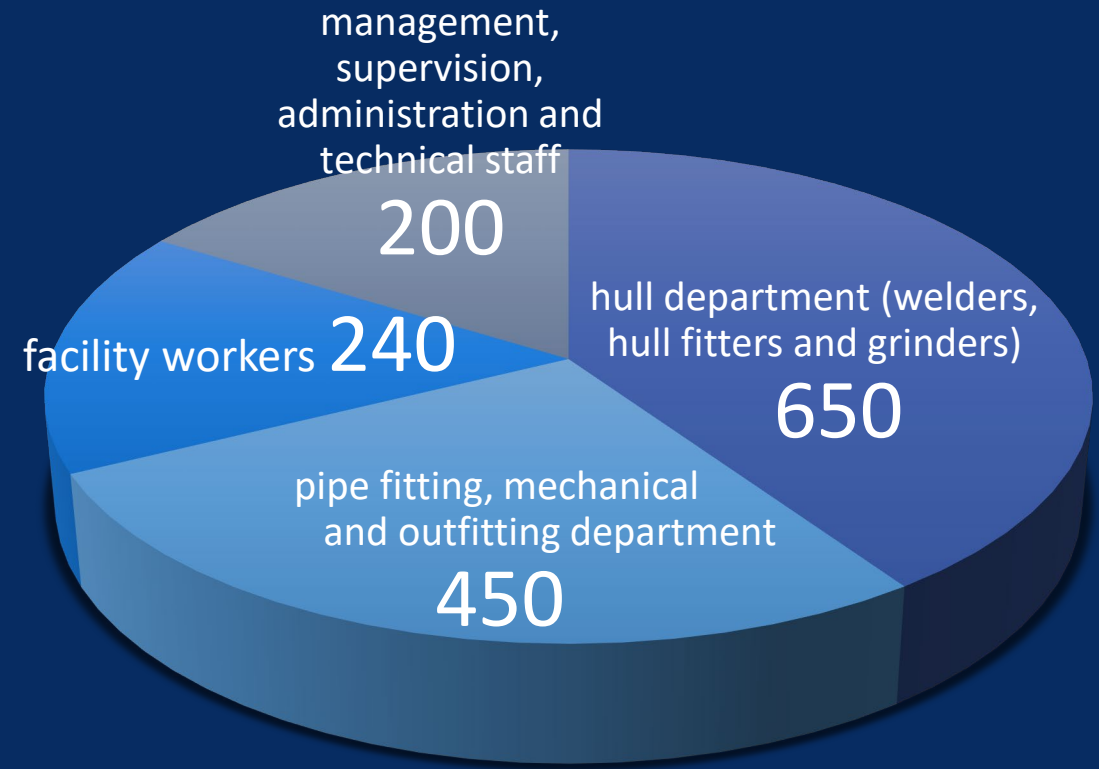
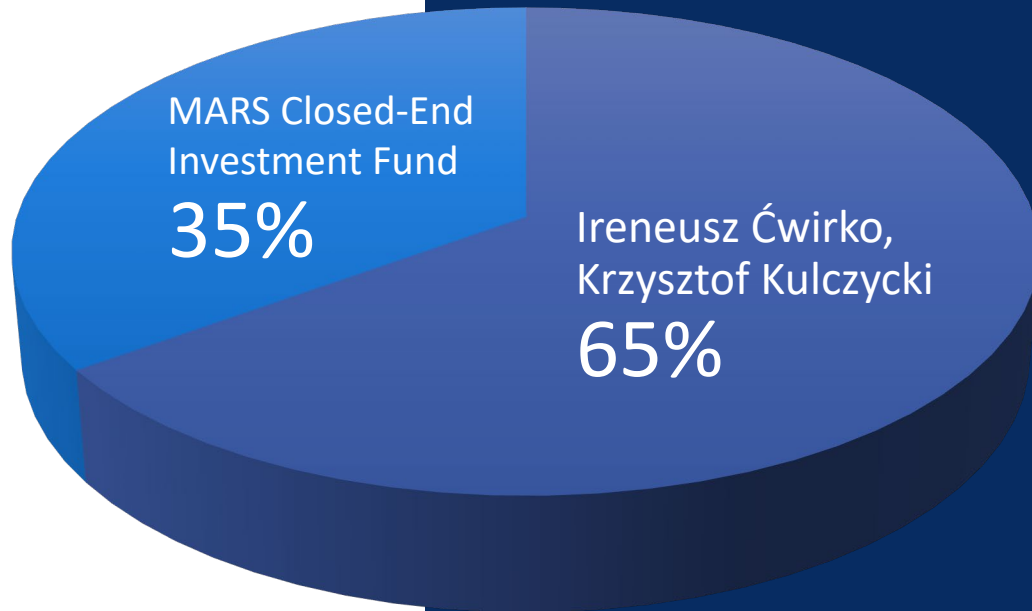
Assembly area
40000 m²

Dry dock SDII
380 m x 70 m

Pontoon
60 m x 20 m

WE WORK HERE

OWNERSHIP and EMPLOYMENT

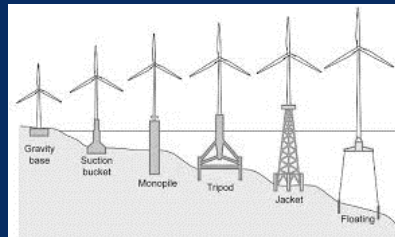


OVER 2000 Employees
(with long term subcontractors)

CRIST PROJECTS IN WIND RENEWABLE ENERGY



Jack Up installation vessels



Floating foundations



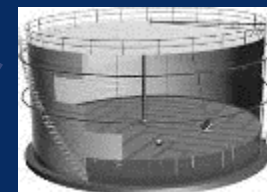
Service and maintenance vessels



Cable layer vessels



Trafo station



Floating cable storage tanks



HEAVY LIFT INSTALLATION JACK-UPS

...at work



THOR 2011



INNOVATION 2012



VIDAR 2013

JACK-UP BARGE B 392 „THOR”



MAIN DIMENSIONS:

Length — 70.00 m

Width — 40.00 m

Height — 6.00 m

LEG DATA:

Length — 82.00 m

Diameter — 3.70 m

Spudcans \varnothing — 8.50 m

OPERATIONAL CONDITIONS:

Draft (without spudcans) — 3.50 m

Draft (with spudcans) — 7.40 m

Operating depth — 50.00 m

Payload — 3.300 t

Deck load — 15.00 t/m²

Hoisting capacity — 10.000 t

Hoisting speed — 1.20 m/min

2 Moon Pools — \varnothing 0.90 m

CRANAGE:

Heavy lift crane Liebherr BOS 14000

Crane capacity — 450 t/15.00 m

MOORING WINCHES:

4 single winches pull 30.00 t/each

POWER SUPPLY:

Diesel, electric

Total output — 5.010 kW

Emergency — 700 kW

ACCOMMODATION:

48 persons

HLJV - NB 142 „INNOVATION”



MAIN DIMENSIONS:

Length hull (overall) — 147.50 m

Breadth hull — 42.00 m

Depth hull — 11.00 m

OPERATIONAL CONDITIONS:

Water depth for jacking — 50.00 m

- Up to 65 m (with leg extension)

Significant wave height for jacking
and DP - Up to 2.00 m

Wind Speed for crane operation — 18 m/s
DP2 according to GL Class

JACKING SYSTEM:

Number of Legs — 4

Leg cross section — Lattice leg

Jacking system — Rack and pinion

Jacking speed — Up to 1 m/min

Jacking capacity — 30.000 ton

HELIDECK:

D = 20.88 m, suitable for Sikorsky S92

THRUSTER AND PROPULSION:

4 x 3500 kW aft azimuth thr.

3 x 2800 kW bow tunnel thr.

Vessel speed Up to 12 knots

POWER GENERATION:

M. Gensets 6 x 4500 kW + 1 x 1620 kW

CRANE:

Crane Lifting Capacity SWL 1500 t @ 31.5 m

ACCOMMODATION:

100 persons

HMV-NB 130 „VIDAR”



MAIN DIMENSIONS:

Length — 140.40 m

Width — 41.00 m

Height — 9.50 m

LEGS AND SPUD CANS:

Length — 90.00 m

Diameter — 4.80 m

Spudcan area — 125.00 m²

OPERATIONAL CONDITIONS:

Draught — 6.30 m

Operating depth — up to 50.00 m

Load capacity — up to 6.500 t

2 Monn pools — Ø 0.8 m

JACKING SYSTEM:

Lifting capacity — 24.500 t

Lifting speed — up to 0.83 m/min

MAIN CRANE:

Offshore crane Liebherr CAL 45000

1200 Litronic

Capacity — 1.200 t/27.50 m

POWER AND PROPULSION:

Total power — 24.000 kW diesel-electric

Emergency generator — 781 kW

Transit speed — 10.2 knots

ACCOMMODATION:

90 persons

HEAVY LIFT JACK-UP BARGE NB 105 „ZOURITE”

for construction of offshore
viaduct at the island Reunion



MAIN DIMENSIONS:

Length — 106,5 m

Width — 49 m

Design draft — 5,95 m

Maximum air draft (legs up) — 51,65 m

Maximum payload — 4730 t

Assumed deadweight for design draft — 5550 t

4 main engines (diesel electric)

Combined mass of the hull — about 5000 tons.

OPERATIONAL CONDITIONS and CRANAGE:

4 propellers

Winch with automatic winch with automatic tension, winch DP1

Two gantry cranes (total lifting capacity
5000 tons)

JACKING SYSTEM:

8 x RCP Continuous Jacking System:

Capacity operational — 1850 T

Capacity preload — 2850 T

Speed — 30 mtr/hr

Length — 55.00 mtr

Spud pipe diameter — Ø 3.00 mtr

- 5 SOV Vessels built in cooperation with ULSTEIN



MAIN DIMENSIONS:

Length overall – 93 m

Beam – 18 m

Dead weight – 3,200 tonnes

Draught (max) – 6.0 m

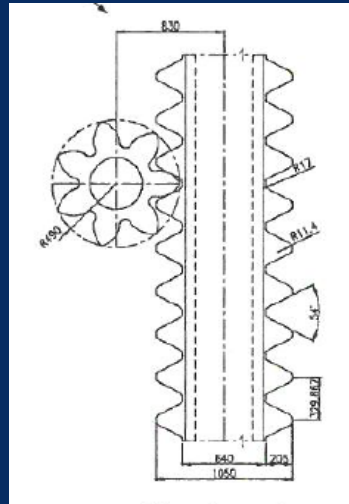
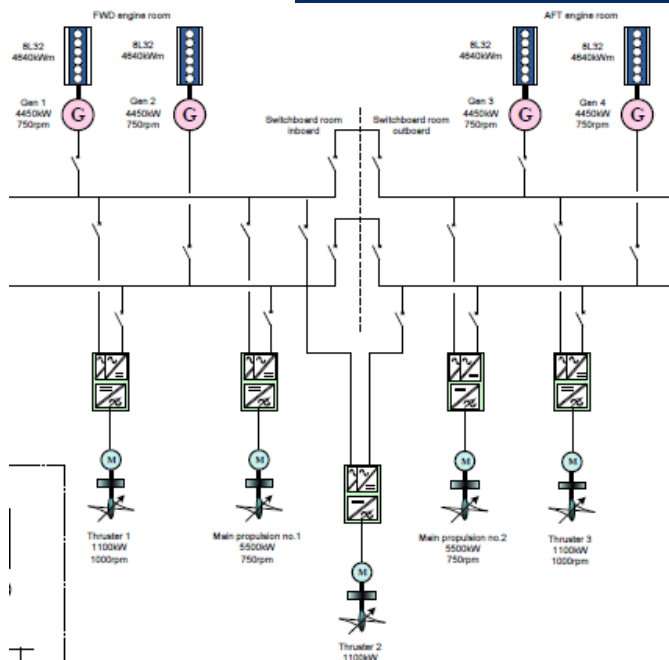
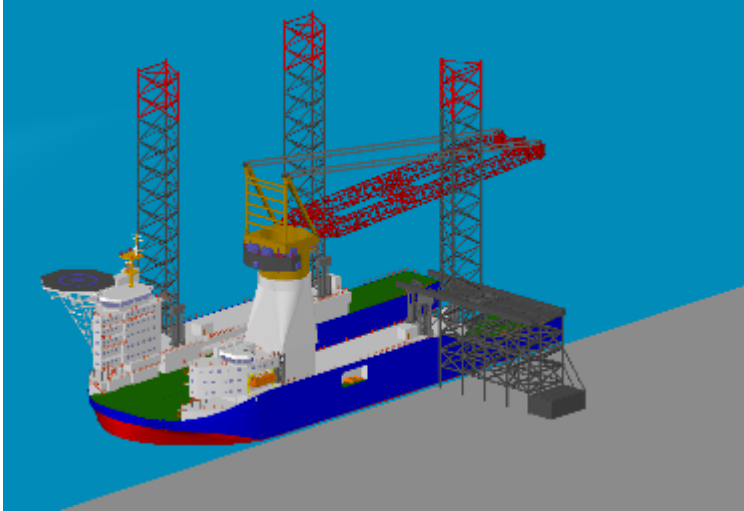
Speed (max) – 13 kn

Accommodation – 80-120 POB

Deck area – 500 sqm



HLJV 2025 - NEW GENERATIONS – WELL RECOGNIZED CHALLENGES

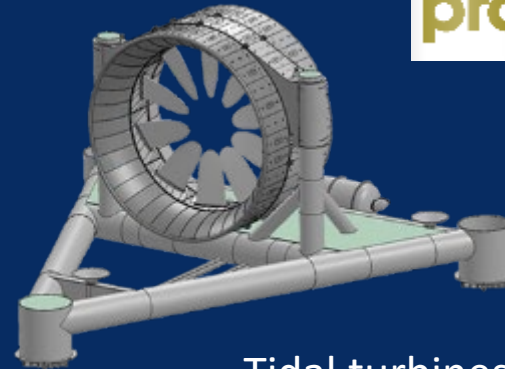


- 6 CONCEPTS WELL RECOGNIZED AND IN DISCUSSION
- 3 JACKING SYSTEMS CONSIDERED
- ADVANCED DISUSSION WITH MAIN CRANE MAKER
- 4 CONCEPTS FOR EXTENDED LEGS INSTALLATION
- RECOGNIZED TECHNOLOGY FOR THICK RACK
- DEVELOPED TECHNOLOGY FOR HIGH DRAFT LAUNCHING
- GREEN PROPULTION
- DRY DOCK FITS FOR LARGEST PROJECTS, FOR BUILDING, SERVICE AND UPGRADES

OTHER SIGNIFICANT PROJECTS DELIVERED IN THE LAST 5 YEARS



The Floating Dock for new land in Monaco



Tidal turbines



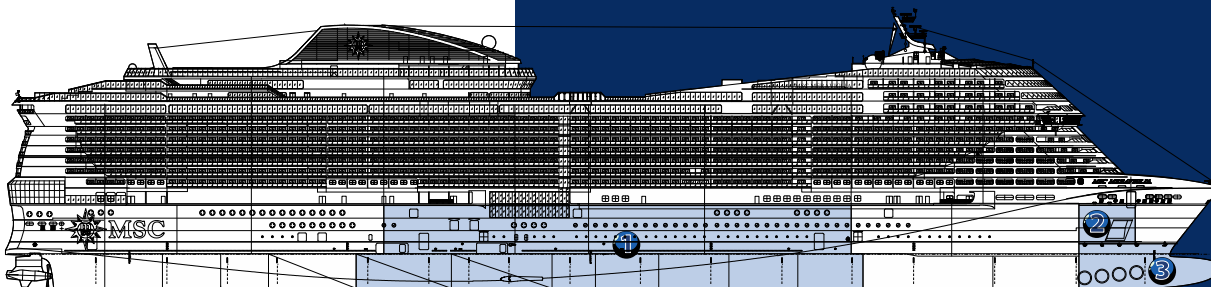
Ship of the Year 2018



Modern fishing vessels



Plug-in, turn key floating mega blocks for cruisers



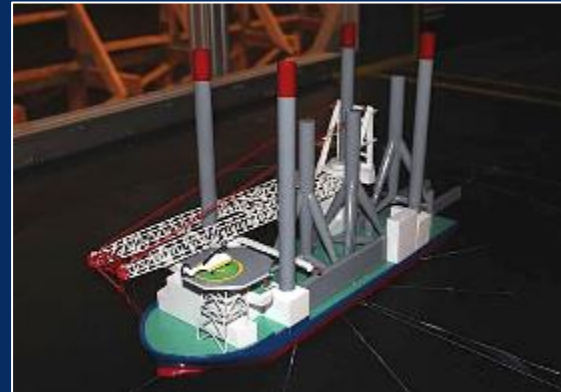
Hybrid RO PAX





RESEARCH AND DESIGN

CRIST S.A. is cooperating with leading design offices and research and developing institutes in ship design and engineering; whose area of activity includes: shipbuilding, offshore vessels, technical vessels, harbor constructions, research and development.



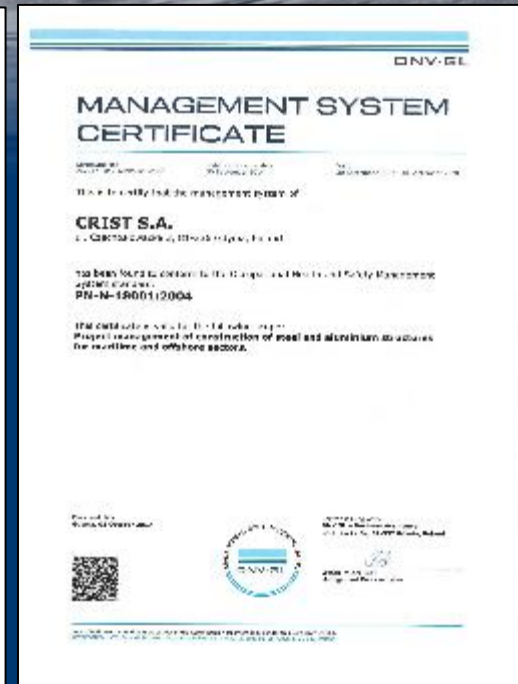
New Jack up
concept
created in
2016



MANAGEMENT SYSTEM

Our company meets the requirements of:

- PN-N-18001:2004 (DNV GL)
- ISO 9001:2015 (DNV GL)
- ISO 14001:2015 (PRS)
- AQAP 2110:2016 (WOT)





Thank you for your attention!

CRIST S.A.
ul. Czechosłowacka 3
81-336 Gdynia
Poland

phone: +48 58 769 33 00
fax: +48 58 769 33 01
sales@crist.com.pl

<http://www.crist.com.pl>